

Greenprint Forum newsletter winter 2022/23



Winter is a great time for planting trees, lots of which has been going on in eastern Suffolk for example the creation of a new 5.8 hectare woodland of mixed native species which has been continuing throughout the winter at Woods Meadow in Oulton Broad (pictured above), courtesy of the efforts of local Footprints Volunteers supported by the Countryside Team at East Suffolk Norse. The wider vision for the site will ultimately comprise a mixture of habitats including the aforementioned new mixed deciduous woodland of about 5.8ha (including several hazel coppice coupes), about 2ha of scrubland, a wildflower meadow, a wildlife pond, hedgerow, and a large hay meadow with a late summer cut and restrictions on human access during the skylark nesting season to ensure that suitable habitat for ground nesters such as skylark is retained and enhanced on the site.

More about the Footprints Volunteers scheme and how to get involved is provided by the local Countryside Officer Chris Ryde, on page 6, whilst we cover an initiative harnessing “pupil power” to enhance the treescape of a council car park in Felixstowe on page 9.

Your secretary visited Dip Farm Green Space in north Lowestoft last October, where the [Friends of Dip Farm](#), aided by a small grant awarded in 2021 from Greenprint Forum’s Nature First Fund, had been enhancing the site, planting a new community orchard and providing nesting and roosting boxes for birds and bats in some of the established trees.



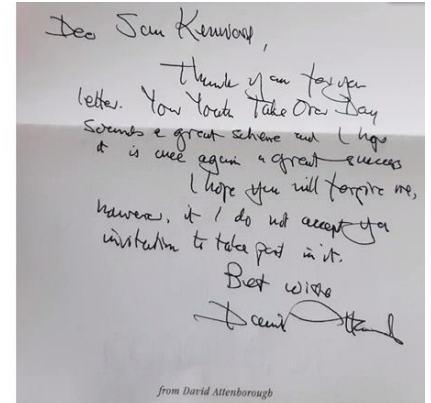
Pics of bird and bat boxes in trees courtesy of Friends of Dip Farm

For a summary of projects supported by grants from Nature First so far, visit [Nature-First-projects-funded-2021-2022.pdf \(eastsoffolk.gov.uk\)](#)



Youth Takeover Day

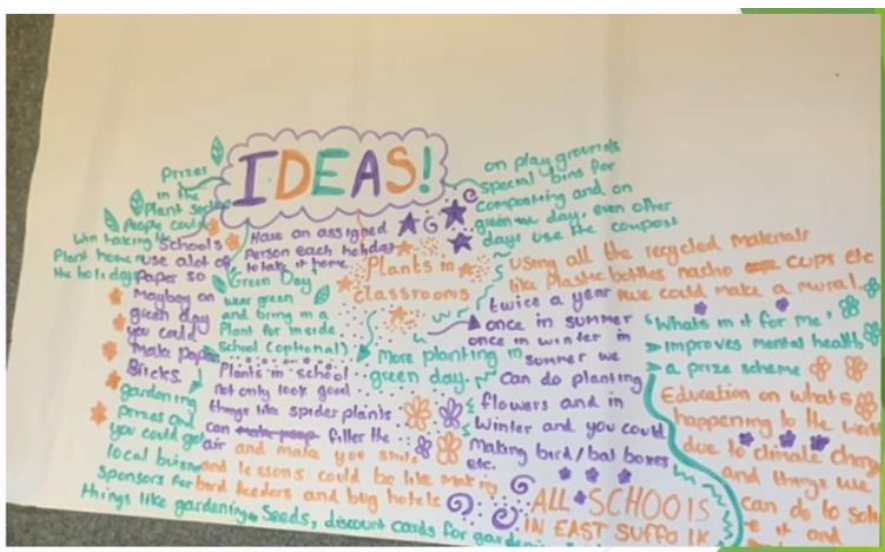
On 25 November 2022 as part of the annual Youth Take Over Day, East Suffolk Council ran an online session with 6 schools participating on the day and one additional school participating via a pre-submitted video submission. The theme of the day was the environment and climate change and in particular, how action at the local level can help meet the broader aim and vision that young people want to see for the planet. The day started with presentations from Professor Mike Brock from University of East Anglia and also Daniel Wareing, East Suffolk Council Environmental Sustainability Officer. There was also a letter read out from Sir David Attenborough to inspire students for the day.



The following educational establishments participated: SET Beccles School; Benjamin Britten Academy (Lowestoft); Alde Valley Academy (Leiston); Sir John Leman High School (Beccles); Kesgrave High School; Felixstowe School; and East Coast College. The challenge the young people had was to put together a big idea that they could do in their local community to meet the aims that young people had said previously in a survey for what they wanted the world to look like in 2070. The ideas were about what could happen in their community now and how they can make that happen. Schools were also asked to share good practice from their school around the environment and climate change. The presentations, the ideas and good practice were all of a really high calibre.

We intend to share this learning more widely so that other schools can see what their peers are doing but also to try and implement some of the big ideas. All of the presentations were really high quality and the ideas actionable on the local level. Schools will now work through the ideas locally and will determine how they can best achieve that through partnering with local groups, receiving and raising funding and potentially piloting projects in partnership with a local town council or charitable trust.

Our next step is to hold a workshop at the East Suffolk Community Partnerships Annual Forum on 3 March, when we plan to work with Daniel Wareing and volunteer Greenprint Forum Steering Group member Emily Knock to deliver a workshop led by young people from local schools, sharing with delegates the ideas put forward during the Takeover Day and explore with delegates the value they can contribute to enliven the ideas of the young people and carry momentum forward.



We would like to thank all of the schools involved for their support and look forward to working with students and staff to try and deliver some of what was said.

Sam Kenward,
Communities Officer,
East Suffolk Council



Quiet Lanes – Milestone Update

“Hooray!”

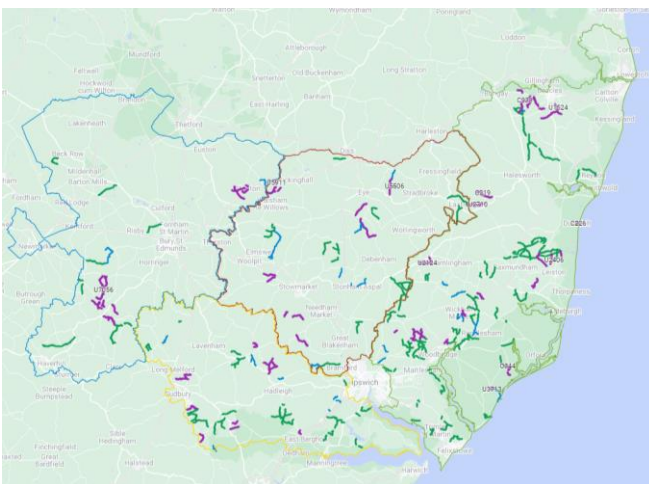
The current process of designating rural roads nominated by local communities to receive formal status as Quiet Lanes under this project which had its roots in the Suffolk Coast & Heaths AONB has, as of January this year, been completed! In total, 265 routes made up of 356 lanes in 118 parishes (that’s about a quarter of all parishes there are in the entire county!), together totalling 450km, have now been formally designated as quiet lanes as a result of this project.

This has been an innovative collaboration between a small volunteer project team, over 100 volunteers from 118 parishes, and Suffolk County Council Highways, with East Suffolk Council and the Greenprint Forum providing underpinning support throughout. Triggered by the mandate to pursue the concept given by Greenprint Forum members at our Travel Forum in 2019, which led to a successful bid for funding to East Suffolk Council, it went on to receive a significant funding boost in 2020 from Suffolk County Council, and more recently in 2022, both Babergh and Mid Suffolk District Councils also committed funding support to the project.

Quiet Lane status will establish a legacy for rural communities countywide, through provision of new signage erected over the coming months in every quiet lane now designated. We hope that this will also provide participating communities with a more accommodating environment in which active modes become perceived as safe, viable and normal alternatives to using the car for short local journeys. The awareness raising campaign on social media accompanying the project has achieved a reach of over 69,000 already.

We are working with a company that provides Sat Nav data with a view to ensuring that quiet lanes are clearly shown on route planning apps and devices so that drivers can make informed choices about the appropriate route to take. The mapping data for all designated lanes is also now being added into the OpenStreetMap OSM database tags which many other routing apps use. This is a significant result and critical success factor to help spread awareness of our network and its tight coupling with the public rights of way and bridleways.

Congratulations are due to the volunteer members of the core Quiet Lanes Suffolk team. Currently these are Andrew Cassy, Chris Taylor, Marianne Munday, Susan Harvey, and Tim Beach; former volunteers Brian Stephens and Garry Savege; and founder Neil Winship who was instrumental in catalysing the original 2013/14 pilot in the AONB which was a key inspiration of the current project.



To visit the interactive map of quiet lanes in Suffolk go to: [QLS Expect & Respect - County Map \(google.com\)](https://www.qlsuffolk.com)



Saving Suffolk's Swifts

Swifts weigh as little as a Cadbury's Crème Egg and once fledged will not land for nearly two years. In that time they will have migrated off to the Congo Basin and returned north to the skies above Suffolk twice. Swifts can be seen screaming and circling around their colonies in exciting displays from May until August. Swifts start to breed in their fourth year and usually fledge two young each summer. The parents pair for life, are nest-site faithful and can live for a further 15 years. If one parent fails to return then the survivor displays to attract in a new partner so that nest sites get passed on through generations.

Swifts nest communally in the nooks and crannies of older buildings taking advantage of roof spaces above the felt and beneath the tiles. Modern building standards, however, require a sealed environment to reduce heat loss and sound transmission, and this blocks out Swifts. It is the loss of their natural nest sites during renovation and refurbishment of older buildings that is the primary cause of the slump in their population. Suffolk's Swift numbers have sadly declined by over a half in recent years and are now on the conservation red-list.

The Save Our Suffolk Swifts (SOSSwifts) project [Save our Suffolk swifts | Suffolk Wildlife Trust](#) is a partnership between Suffolk Bird Group and Suffolk Wildlife Trust. SOSSwifts aim to reverse this decline by both protecting and expanding existing Swift colonies and then helping create new ones with the use of nest boxes.



SOSSwifts provide free Swift surveys and advice about how we can help you help Swifts. We can supply nest boxes and recommend an installer if you are not able to fit the nest boxes yourself. Most two storey locations have somewhere suitable for nest boxes, at or above first floor window height where there is a clear line of flight for the Swifts to swoop in and out.

Once the nest boxes are installed, it is helpful to play Swift calls to help guide in the younger Swifts returning in their second and third years. Swifts are curious and will investigate these calls, learning that there are potential nest places to spread into. They will find the nest boxes, then pair up and return to them to breed in their fourth year. SOSSwifts can provide advice on how to play calls.



SOSSwifts also help where existing nest sites are threatened by building works. We are happy to consult with building owners and contractors to help maintain access for Swifts, and even boost the colony with the installation of nest bricks or boxes.

SOS SWIFTS

Continued on next page



Saving Suffolk's Swifts (continued)

Through fundraising and with the help of both East Suffolk Council and the AONB, Swift Community Sets comprising nest boxes and a call system have been installed on many prominent elevations of public buildings: schools in Felixstowe, Waldringfield, Framlingham and Leiston; libraries in Wickham Market and Felixstowe (pictured right); swimming pools in Woodbridge and Leiston; The Cut theatre in Halesworth and The Riverside cinema in Woodbridge, plus pubs in Eastbridge, Snape and Southwold.



Over time these will provide the opportunity for the public to enjoy the display of our Suffolk Swifts swooping and screaming, sometimes barely above head height.

Swift conservation works. There is a growing list of locations across the county hosting successful nest boxes with an ever-increasing number being occupied each year. Once a pair of Swifts chooses a nest site they return each year and their dare-devil displays and screaming calls draw in further pairs to breed, resulting in a colony. St John's Church in Bury St. Edmunds now boasts 54 pairs of Swifts – a colony built up since their first nest box was occupied in 2016.

Swift nest boxes benefit other species too. Moths and butterflies as well as Blue Tits and Great Tits have been observed using unoccupied boxes, as well as other red-listed bird species such as House Sparrows and Starlings.

If you would like to help Swifts, please do get in touch: SOSSwifts are here to help you. We can help you create your own Swift colony. There is more information about the project at <https://www.suffolkwildlifetrust.org/swifts> and you can email Swifts@SuffolkBirdGroup.org.

Article by Eddie Bathgate, pictures courtesy of Suffolk Bird Group



Stowmarket Eco Future Group – Climate Change Month at the John Peel Centre

5 - 24 March 2023

"We don't need a handful of people doing sustainability perfectly: we need millions of people doing it imperfectly."

Come and discuss what you can do imperfectly.

Booking via www.johnpeelcentre.com, pay as you can.

For more information visit www.stowmarketecofuturegroup.co.uk

Organised by Stowmarket Eco Future Group, hosted by John Peel Centre for Creative Arts, proudly supported by Stowmarket Town Council and Get Suffolk Reading.



CLIMATE MONTH

Sunday 5 March

St Peter's Hall:

3pm: Create a manga character workshop with artist Chitan Garden

5:30pm: Create a manga character workshop with artist Chitan Garden

For the free manga workshop, booking is **advised**, though spaces may be available on the day. Email sarah.maldment@literacytrust.org.uk to book a space.

John Peel Centre:

4pm: Screening of *The Lorax* (rated: U), suitable for all.

7pm: Screening of *Princess Mononoke* (rated: PG).

Friday 10 March

7pm: *What can we do to help the planet?*, by John Hall, PACE.

Heat pump demonstration by Peter Miller from Conga Ltd with Q&A.

Friday 17 March

7pm: Screening of BBC production *Shop Well for the Planet*.

Talk by Bonitas Wholefoods about shopping local, local refill options and opportunities to make local sustainable choices. Followed by Q&A.

Friday 24 March

7pm: Talk, *Nearly all to play for: building a successful mass moderate flank together*, by Professor Rupert Read (UEA). Followed by Q&A. Professor Read's books will be on sale at this event.



John Peel
CENTRE FOR CREATIVE ARTS
Stowmarket
TOWN COUNCIL

GET SUFFOLK READING



CLIMATE MONTH



The Footprints Conservation Volunteers

I have helped supervise the Footprints Conservation Volunteers since January 2012 and there are some volunteers from the inception of the group still volunteering today on council-owned countryside sites. They have planted hedges, cleared ponds, coppiced coupes within woodlands, installed steps and fencing and built board walks among other tasks but perhaps they would agree themselves, that their greatest achievement has been the maintenance and restoration of Sutton and Hollesley heaths. Without their attention and hard work, the open areas of heathland on these designated Sites of Special Scientific Interest would be well on their way to woodland. Meeting at 10am and often working through to 3pm with two breaks gives most volunteers all the physical exercise needed to keep in shape. Perhaps even more importantly it provides an interesting social point in the week as members that are predominantly retired and from different working backgrounds share experiences and knowledge.



Interpretation Board at Sutton Heath

To recognise the Footprints Volunteers especially, we have produced and dedicated new interpretation boards, two for each site. The boards also recognise other community groups and companies such as British Telecom's volunteering contributions on the council owned Sutton and Upper Hollesley heaths. These contributions and personal donation of time and energy should never be

underestimated as without them the conservation of this habitat simply wouldn't happen. It should be mentioned that the benefits to the individual are high and volunteering should always be enjoyable. The physical work keeps the body mobile and warm on a winter's morning on the heath while removing unwanted pine and birch saplings and the social aspect while working and especially at tea breaks is looked forward to by all, including myself.



Getting stuck in with some heathland management



Time for a well earned tea break and chat



Creating the new woodland at Woods Meadow, Oulton Broad

We have mere fragments of lowland heathland habitat left in the UK and the Suffolk coast is lucky to have a considerable chunk of this globally rare habitat. It is essential that we do all we can to conserve and in suitable places restore lowland heathland. Much work still needs to be done in raising awareness of this habitat as I still meet people walking on the heath on a summer's evening that don't know that they are listening to the strange churring sound of breeding nightjars. We must also ensure that the Footprints volunteers carry on into the future, so if you are freshly retired looking for a way to keep active or in between jobs or education, contact us and I will give you all the details to begin a relationship with a landscape and group that will be rewarding.

Chris Ryde, Countryside Officer for East Suffolk Norse Chris.ryde@ncsgrp.co.uk



Greener Waldringfield

Greener Waldringfield has recently republished its '[Waldringfield Directory](#)' with a grant from the Parish Council. This details all the community group activities in the village interspersed with tips for greener life and action. You can find it on the Greener Waldringfield Website [A Greener Waldringfield](#) . A copy was delivered to every household and it will be regularly updated on the website.

GW's greatest activity this year is centred round initiating and co-ordinating two Green Infrastructure half-day workshops to be run by Peter Hobson (Professor in Biodiversity Conservation & Sustainability within the School of Sustainable Environments at Writtle University College) who has international experience in this area and who has recently led a series of such workshops for The Essex Climate Commission (an Essex County Council body), and one or more colleagues. Peter Hobson lives in Suffolk and has given several talks locally in the past year.

These workshops will involve stakeholders including Parish Councillors, representatives of bodies like the Wildlife Trust and individuals / activists from within the two groups of Martlesham and Waldringfield with Newbourne, Hemley and Brightwell. They will assess the status of natural assets and devise plans for enhancing and protecting them - the exact agenda will depend on the particular concerns and capacities of the stakeholders. These workshops should forward co-operation afterwards between these particular areas to the west of the River Deben and bordered by the A12 which also share being part of the AONB, contain significant areas of nature reserve and need to work together with the emerging Brightwell Lakes development. These workshops could be a blueprint for similar workshops in other clusters of parishes to turn the aspirations of The Nature Recovery Strategy and other upcoming statutory obligations into grounded reality.

The workshops will be in Waldringfield in late May or June - date t.b.c

Betsy Reid, Greener Waldringfield



Greener Waldringfield brings together concerned villagers to learn about the climate crisis and take action for the environment.

This updated Directory of Waldringfield's services, groups and events includes small tips on how we can become Greener Together. Most information is available and usually up to date on the internet (see the back cover) but, to make it fully and easily accessible, the Parish Council has provided a grant to help us to deliver a printed version to every household in the village.

The Parish Council adopted a Climate and Ecological Emergency Statement in 2021 including "We will ensure that climate change is a factor in all our future decisions." The Council has tasked Greener Waldringfield with producing an Action Plan - for the way it is evolving, see www.greenerwaldringfield.org

THINK GLOBAL- ACT LOCAL

Consultations that may be of interest

Consultation has started on the draft Coastal Adaptation Supplementary Planning Document to support communities in Suffolk and Norfolk that may be affected by coastal change. **Consultation ends 5pm Wednesday 8 March 2023.**

East Suffolk Council is preparing a new Rural Development Supplementary Planning Document and are now gathering feedback on what it should include. View the initial consultation document and complete the questionnaire **Deadline 5pm on Wednesday 15 March 2023.**

BEIS are consulting on proposals on improving boiler standards and efficiency including the role of hydrogen and hybrid systems in decarbonisation: Improving Boiler Standards and Efficiency - Department for Business, Energy and Industrial Strategy - Citizen Space **closes 21 March 2023**



Update on legislative action on single use plastics and deposit return schemes

Last month, the government published its outline plans to introduce a Deposit Return Scheme (DRS) for commonly littered items: [Introducing a Deposit Return Scheme for drinks containers in England, Wales and Northern Ireland - government response \(publishing.service.gov.uk\)](#) In England, the scheme, due to be implemented in 2025, will cover plastic and metal single use containers ranging in capacity from 50ml to 3l. Whilst not in scope of the DRS in England and Northern Ireland, glass drinks bottles will be covered by the [Extended Producer Responsibility](#) for packaging scheme in both nations, which will place targets on producers in relation to glass recycling. DRS in both Scotland and Wales will encompass glass bottles.

This accompanied the announcement of plans to extend the existing ban on certain single use plastic items, to encompass more items including plates, trays, bowls, cutlery, balloon sticks, and certain types of polystyrene cups and food containers set to come into force in October 2023: [Far-reaching ban on single-use plastics in England - GOV.UK \(www.gov.uk\)](#)

Nonetheless there is still more to be done to turn the tide on plastic pollution, so please continue with any [Plastic Action](#) activities you may be a part of whether on promoting the concept of local refill outlets (visit [Refill Directory - Suffolk Recycling](#) for a useful directory of local refill shops and mobile vendors) that enable shoppers to purchase goods such as household cleaning products and certain dry foods loose without single-use packaging; participating in citizen science for the Marine Conservation Society by carrying our surveys of litter via [Beachwatch](#) and [Source to Sea](#), data from which have been key in the efforts of Marine Conservation Society in gathering evidence to make the case and persuade government of the need for legislative action; or simply picking up and disposing of those stray items in the environment that you encounter when out and about.



Greenprint teamed up with the fabulous [Litter-free Felixstowe](#) for one of our [Beachwatch](#) surveys last autumn!

Show Your Love for East Suffolk and join the spring clean movement!

If your group or organisation want to do something about it by arranging a community litter pick, we can support you through the loan of litter pickers and bags, and arrange to take away and safely dispose of the bagged litter afterwards; simply register your activity here [Community litter picks - My East Suffolk](#) and we'd love to receive a picture from your activity so we can add it to our gallery at [Love East Suffolk » East Suffolk Council](#) and recognise your efforts.

There are lots of groups throughout Suffolk who carry out regular litter picking, so if you want to connect with like-minded people and support grass roots action tackling litter alongside others, why not check this handy directory of the groups we know about [Suffolk litter picking - Suffolk Recycling](#) If you are part of a local group who are out picking litter regularly and who aren't listed and would like to be please let me know via greenissues@eastsuffolk.gov.uk



Planting trees in Felixstowe with local school pupils

An enthusiastic group of schoolchildren pitched in to help plant the last crop of hundreds of trees in Felixstowe as part of a biodiversity boosting initiative.

Ten pupils from Fairfield Infant and Colneis Junior School joined the East Suffolk Norse grounds and maintenance team to plant the final batch of 300 whips beside the public car park in Golf Road.

Along with a total of 30 standard trees, the young seed-grown whips have been planted as part of an effort to enhance the landscape and encourage natural regrowth for generations to come.

The planting programme follows a [successful joint application](#) to the Local Authority Treescapes Fund (LATF) by East Suffolk Council (ESC) and Suffolk County Council, along with other district and boroughs, through the Forestry Commission, and will see 7,526 trees planted across the county. As well as the planting, the LATF funding of £138,219 will also cover three years of maintenance.

In Felixstowe, staff from ESC's grounds and countryside maintenance partners, East Suffolk Norse, focused planting in spaces between the mature maple trees to the front of the carpark – expanding the woodland to the northeast, with a temporary chestnut panel fence installed to protect the new whips.



Following a talk by the Countryside Officer Chris Ryde, the local schoolchildren got stuck in with digging, planting, staking and mulching for the final whips.



Last year, the same children had submitted a video to the Council in response to a planning application for the removal of a number of trees (the application was later rejected). After a preliminary ecology report, undertaken by the Suffolk Wildlife Trust, suggested that the biodiversity of the site could be improved, it was considered to be an excellent project to put the LATF funding towards.

The new trees are a variety of species, mainly bearing fruits and berries edible to wildlife, and will be regularly watered and surveyed to monitor improvements in biodiversity. The standard trees have been used to fill in gaps in the avenues and throughout the woodland, whereas the whips will provide cover and support for wildlife. A temporary fence has been erected to protect the new planting from the northern side until the planting is more established.

The project will also serve as a pilot project for the development of a wider Tree Strategy for East Suffolk Council.



New Smart House officially opens at Digi Tech, Aadastral Park Martlesham

A zero-carbon house which will be the “embodiment of sustainability” has been opened at BT’S Aadastral Park. [New Smart House Officially Opens at DigiTech | University of Suffolk \(uos.ac.uk\)](https://www.uos.ac.uk/news/new-smart-house-officially-opens-at-digitech)

The University of Suffolk DigiTech Smart House project is a collaborative research facility that aims to demonstrate the regional capacity for designing, building and occupying sustainable homes.

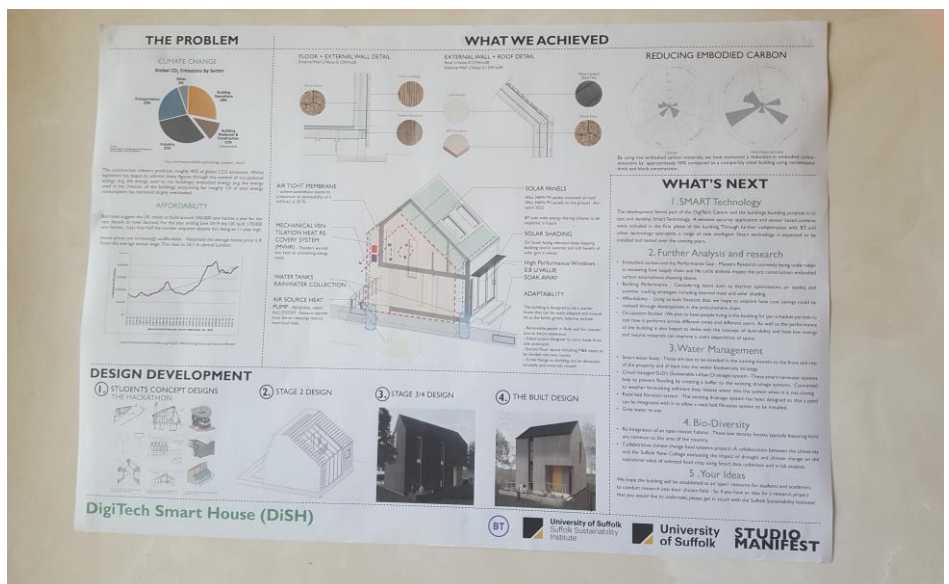
The DigiTech Smart House will utilise systems to evaluate the performance of sustainable materials, low carbon energy and water consumption addressing two pressing concerns - climate change and the impact that the construction industry has on this, and the UK housing crisis through chronic shortage of affordable homes, and will be used as a ‘living laboratory’ and demonstrator by the University of Suffolk and a range of third-party innovation partners.



Partners in the project include the New Anglia Local Enterprise Partnership and BT and it coincides with the launch of the Suffolk Sustainability Institute.

The building will be easy to maintain and comfortable to be in offering a vision for a sustainable way of life that enhances lifestyles and acts as a template for future domestic homes.

For further information, or to book a tour of the Smart House please direct enquiries to digitech@uos.ac.uk



Funding opportunity – could you host a Community Pantry?

Community groups, organisations and town and parish councils are invited to apply for a new grant scheme which will help provide affordable food to East Suffolk residents in need. [Applications now open for Community Pantries grants » East Suffolk Council](#)

Supported by the UK Shared Prosperity Fund (UKSPF), the East Suffolk Pantries Grant Scheme is a three-year programme which aims to fund the initial set up of community pantries across the district, helping people in need to access affordable food in their local community. These pantries will provide a welcoming space, similar to a shop, where people can pay a subscription of less than £5 per week and receive food worth at least £15 in return. Pantries can also provide additional support, signposting to other local services and help to reduce social isolation.

Pantry providers will become part of the East Suffolk Food Network, bringing together organisations providing both affordable food, and food in times of crisis. The network will be used to share best practice, gain support and manage access to surplus food to ensure fairness in distribution.

Applications are welcome from community and voluntary groups, organisations and town and parish councils. Grants of up to £4,500 are available and applications close on **15 March 2023**. To apply, visit [East Suffolk pantries grant scheme application - My East Suffolk](#) Please visit the guidance [East-Suffolk-Pantries-Grant-Scheme-guidance.pdf \(eastsuffolk.gov.uk\)](#) before applying.



In December, East Suffolk Council was allocated £2.75m from the UK Shared Prosperity Fund (UKSPF) which will be used to support high streets, local businesses, workforce and community skills development, as well as support for those struggling with the cost-of-living crisis.

The scheme is part of work by East Suffolk Council working closely with partners and stakeholders to ensure [support is available to help ease the squeeze](#) for households in East Suffolk.



Blooming Bulbs!

Early spring bulbs provide a source of food for wildlife after the winter making them vitally important for our natural environment, providing nectar for many insects and helping the birds that prey upon them in turn. East Suffolk Council has launched a new annual scheme, East Suffolk Blooms, to make spring bulbs available to voluntary and community groups to plant locally in time for next spring.

Groups interested in the scheme will need to complete an application form [Bulb planting scheme application - My East Suffolk](#) giving information about the group, which parish it is located in and where the bulbs would be planted. Bulbs obtained through the scheme can only be planted on public land owned by East Suffolk Council, Suffolk County Council or the local Parish or Town Council only.



The scheme is open for applications until 31 May 2023, ahead of a decision panel meeting to consider applications in June. Successful applicants will then be invited to collect their bulbs from the depots in either Ufford or Lowestoft in early November.

A different variety of bulbs will be on offer, in limited numbers, each year. For 2023, the bulbs will be a variety of narcissus, available in bundles of 500, although groups may apply for more than one bundle.

New look textile recycling banks coming to east Suffolk!

New-look recycling banks for textiles are being rolled out in east Suffolk and the first sites to receive them will include: Aldeburgh Fort Green; Beccles Blyburgate car park; Felixstowe Ranelagh Road and Garrison Lane car parks; Framlingham Fore Street car park; Halesworth Angel Lane North car park; Kirkley Clifton Road car park; Lowestoft Royal Green car park; Thorpeness Beach car park; and Woodbridge Station Road car park.

The council is keen to establish more sites for new textile banks to make it easier for residents to recycle their old worn out garments, particularly in the north of the district. If your group has suitable premises that could host a textile bank for the local community to access, we'd love to hear from you – please contact operations@eastsuffolk.gov.uk

Of course reuse and repair is above recycling in the waste hierarchy, so continue to donate to charity those garments that someone else could benefit from, and bring garments in need of minor repair to one of the regular local [Repair Cafes](#).



Update on Net Zero Leiston

Net Zero Leiston is a scheme conducted by Leiston Town Council, with the support of expert consultancies and Sizewell C. The project had a very busy 2022, which started with the publication of its “Route Map to Net Zero”. This detailed plan highlights one route for the community to reach Net Zero Carbon emissions, in addition to enhancing biodiversity and reducing the cost of energy for consumers.

This detailed plan is made available to all communities who are looking to do their part in fighting climate change. If you would like to see the route map, visit www.netzeroleiston.info to request a copy. On the website, you’ll see a summary document and summary video which explains more about Net Zero Leiston.

One area of success has been in the use of grant funding to increase the energy efficiency of houses in Leiston. Net Zero Leiston has used Energy Company Obligation funding (from EDF) and Local Authority Delivered Green Home Grant funding (Warmer Suffolk) to offer free property insulation for lower income homes. Nearly 30 measures have now been installed in Leiston, completely free of charge to the household. These were a mixture of internal wall insulation, loft insulation, underfloor insulation, and room in roof insulation. This added insulation has made Leiston homes warmer, and saved residents money on their bills, as well as reducing their carbon footprint.



The project places great importance on the need for “Net Zero” to work for the whole community. That’s why low cost or self-financing schemes are vital. The project knows that Leiston isn’t the only community with this requirement!

More is planned for 2023, including a busy events calendar, applications for funding for EV chargers and new partnerships. A masterplan for Leiston has recently been published in draft form. Net Zero Leiston aims to play a big role this masterplan, ensuring that sustainable construction and nature are considered as part of developing plans. We will hear later this year the outcome of the masterplan, but the future is bright in Leiston.

If you’d like to keep up to date with the progress of the project, feel free to follow Net Zero Leiston on social media [@NetZero_Leiston](https://twitter.com/NetZero_Leiston) / [Twitter](https://www.facebook.com/NetZeroLeiston) / [Facebook](https://www.facebook.com/NetZeroLeiston) . The project is always keen to hear thoughts from the community and further afield and looks to follow and promote best practice. Hopefully Net Zero Leiston can inspire you!

Jack Raven, Project Analyst (Sustainability), Sizewell C



Message from James Mallinder

Dear reader

I hope you enjoyed reading this newsletter as much as I have. Across the whole of East Suffolk our projects are as varied as our communities and it gives me confidence about the future that a growing number of residents know, like you and I, that we need to act to solve our environmental issues.

I can't read a newspaper without seeing more headlines about a particular native species under threat or records on extreme weather. It is a worry to all of us and I have tried as cabinet member for the environment to do as much as possible to make a difference. The environment is a core principle of our [Strategic Plan](#) and we declared a climate emergency reemphasising this commitment. I didn't just want to have endless meetings and talk about the issues as these meetings need to be combined by actions. In particular I acknowledge the incredible biodiversity around us so I have emphasised the importance of nature, especially in trying to incorporate this into our lives not remove it.

I am so very proud of our reduced mowing campaign, soon to be relaunched in its 4th year, [Pardon the Weeds we're Feeding the Bees](#). Each year we have added to this campaign, from reducing glyphosate spraying by 45% (with further ambition to reduce further), to planting of oak trees and this year our wonderful new campaign [East Suffolk Blooms](#). And of course I try to highlight the issues around us from farming techniques, use of public transport and supporting clean water campaigns.

Through my chairmanship of the cross-party [Environment Task Group](#) we have made sure environment policy is embed into the working practices of your council and we have engaged in a [string of correspondence to ministers and our MPs](#) pushing for better legislation to protect our environment, not less. We have illustrated leadership in landscaping our Melton headquarters into a nature reserve along with reducing the council's carbon footprint, our move to hydrotreated vegetable oil a big jump forward towards our carbon neutral target.

Work goes on and much needs to be done, but I know through your commitment of making a difference in your communities we will be doing as much as we can.

And finally I want to give you a big thank you for all the work you have achieved in your communities, from establishing repair cafes, running litter picks, making space for wildlife, establishing quiet lanes, or organising climate meetings – of which I have spoken at many.

Never stop fighting for what you believe in and yes our future can be nature rich, carbon neutral and just gentler on the earth – but only if we choose.

We are the first generation to understand the problem but it will be future generations who will face the worst impacts so our generation has a special responsibility, so let's not waste this opportunity.

Thank you

James Mallinder

East Suffolk Council, Cabinet Member for the Environment



Contributors

Thanks are due to all our contributors: Betsy Reid (Greener Waldringfield), Chris Ryde (East Suffolk Countryside Team), Eddie Bathgate (SOS Swifts), Jack Raven (Net Zero Leiston), James Mallinder (East Suffolk Councillor), Sam Kenward (East Suffolk Council Communities Team), Sharri McGarry (Stowmarket Eco Futures), University of Suffolk, Suffolk Bird Group, and the Quiet Lanes team.

Of course, whilst there is as always plenty in this issue, there will be lots more that I have not captured; the environmental world is always an active one especially in eastern Suffolk where we are so lucky to have so many active groups and individuals taking the initiative.

This newsletter is of most value when content is informed by its members. If you have a story about action you are taking that contributes to our shared vision that you would like to share, or would like your project highlighted in our newsletter, please drop me a line on greenissues@east Suffolk.gov.uk

GREENPRINT FORUM VISION



New members welcome!

If you are already a member please share this newsletter with and encourage others in your network to join, and if you have received or found this newsletter and are not yet a member why not join us, **membership is free and open to all.**

The easiest way is to go online and register via: [Greenprint Forum membership form - My East Suffolk.](#)

You are very welcome to share this newsletter. The editor makes no claims or promises about the accuracy, completeness, or adequacy of the contents of this newsletter and expressly disclaims liability for errors and/or omissions. Editor – Daniel Wareing, Environmental Sustainability East Suffolk Council; Secretary of Greenprint Forum